

---

PERMIT ATTACHMENT

APPENDIX VII

CONTAINER STORAGE AREA CONCRETE PAD  
ENGINEERING EVALUATION

This document was not altered from the April 2016 Application.

September 2018

---

APPENDIX VII

CONTAINER STORAGE AREA CONCRETE PAD  
ENGINEERING EVALUATION

FOR

SIEMENS INDUSTRY, INC.

PARKER REACTIVATION FACILITY

PARKER, ARIZONA

Revision 1  
April 2012

**SIEMENS WATER TECHNOLOGIES CORP.**  
**PARKER, AZ**

**WAREHOUSE CONTAINMENT**  
**INDOORS**

**5" HIGH WALL (CONTAINMENT WALL & FOUNDATION WALL)**

AREAS:	L	W	H	VOLUME CF	VOLUME GALLONS
	73.54	42.17	0.42	1292	9,665
	51.50	9.33	0.42	200	1,498
	51.50	26.00	0.42	558	4,173
	21.54	13.00	0.42	117	873
			TOTAL:	2167	16,208

**PYRAMIDAL VOLUMES:**

(SEE DRAWING D100601-S-3V, Rev "B")  
 FLOOR SLOPES TO DRAIN:  
 FLOOR SLOPE = 1/8" IN 12" OVER APPR. 19.375'  
 FLOOR DEPTH AT TOP OF TRENCH = 2.375" = 0.2'  
 TRENCH VOLUME NOT INCLUDED.

CONSIDER EACH SLOPED END AS 1/2 OF A PYRAMID,  
 (BASE UP) 1 END PARTIALLY COVERED WITH WALL.  
 PYRAMID 2.375" HIGH, WITH BASES 38.75' ON A SIDE.  
 ESTIMATE AT 1.5 PYRAMIDAL VOLUMES,  $V = 1/3 AH$

QUAN	1/3	L	H	CF	GALLONS
1.5	0.33	38.75	0.20	150	1,123

**BETWEEN PYRAMIDAL ENDS:**

40' + 32' (APPROX.) = 72' OF A TRIANGULAR SHAPED VOLUME  
 2.275" HIGH TRIANGULAR AREA WITH A 38.75' WIDE BASE  
 $V = 1/2 WHL$

QUAN (L)	1/2	W	H	CF	GALLONS
72	0.50	38.75	0.20	279	2,087

**TOTAL CONTAINMENT VOLUME, GALLONS:**                      **19,418**

**REQUIRED VOLUME, GALLONS:**                                      **10,000**

# LuMar Engineering

## Memorandum

To: Mike Troup  
From: J. Dunlea

16 January, 1994

Subject: Westates Carbon Inc.  
Carbon Reactivation Facility, Parker, AZ.  
Part B Certification.

The followings items are statements and notes required for the application. The items numbers reference your "Regulatory completeness checklist".

### PART D - PROCESS INFORMATION

Warehouse Storage Area:  
=====

#### D-1a(1): Basic Design Parameters.

Base design and materials of construction:

The warehouse slab-on-grade is designed for secondary containment. The construction is 5" thick reinforced concrete (3000 psi) slab on 2" sand on 6 mil visqueen vapor barrier on 4" compacted gravel base. All construction and control joints in the slab are sealed with a sealant.

Eng. evaluation of structural integrity of base:

The slab is designed for warehouse storage use and light forklift traffic.

#### D-1a(2): Description of how design promotes drainage.....:

Grading of base:

The slab is sloped 1/8"/ft. to trench drains.

Drainage design and removal system:

The slab slope is from the perimeter to the interior trench drains (1' X 1' min.). The trench drains slope to a sump (3' X 3' X 3') for removal. Any spills within the containment area will drain to the sump. In addition a 5" high curb is provided continuously around the entire building.

**GENERAL NOTES**

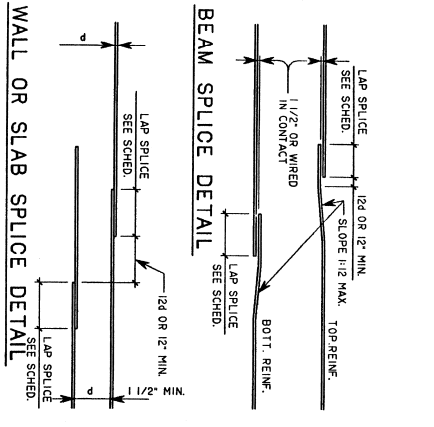
- GENERAL**
- THE CONTRACTOR SHALL VERIFY ALL DIMENSIONS AND JOB CONDITIONS BEFORE STARTING WORK. NOTIFY THE ENGINEER OF ANY DISCREPANCIES. VERIFY ALL REQUIRED CLEARANCES AND TAKE MEASUREMENTS FOR BUILD-IN ITEMS ON THE JOB SITE.
  - NOTES AND DETAILS ON THE DRAWINGS TAKE PRECEDENCE OVER THESE GENERAL NOTES AND THE TYPICAL DETAILS.
  - DIMENSIONS TAKE PRECEDENCE OVER SCALES SHOWN ON THE DRAWINGS.
  - ALL WORK SHALL CONFORM TO THE HINDEN STANDARDS OF THE FOLLOWING:
    - \* BUILDING CODE - USC 1989 EDITION.
    - \* INTERNATIONAL MECHANICAL ELECTRICAL CONTRACTORS CODE OF PRACTICE (LATEST EDITION) LISTED IN THESE NOTES AND SPECIFICATIONS.
  - COORDINATE WITH THE MECHANICAL, PLUMBING, AND ELECTRICAL, METAL BUILDING AND EQUIPMENT DRAWINGS.
  - THE STRUCTURAL DRAWINGS AND SPECIFICATIONS DO NOT INDICATE THE METHOD OF CONSTRUCTION. THE CONTRACTOR SHALL PROVIDE BRACING AND SHORING FOR LOADS DUE TO CONSTRUCTION EQUIPMENT, ETC.
- EQUIPMENT AND OPENING LOCATIONS**
- VERIFY ALL DIMENSIONS LOCATING MECHANICAL EQUIPMENT, OPENINGS AND SUPPORT BEAMS FOR EQUIPMENT. COORDINATE WITH EQUIPMENT SUPPLIERS, MECHANICAL CONTRACTOR AND MECHANICAL DRAWINGS. VERIFY CLEARANCES TO EXISTING AND NEW CONSTRUCTION.
  - COORDINATE SIZE OF EACH OPENING WITH MECHANICAL CONTRACTOR AND MECHANICAL DRAWINGS. VERIFY CLEARANCES TO EXISTING AND NEW CONSTRUCTION.
  - DO NOT FABRICATE STEEL UNTIL ALL NECESSARY VERIFICATION AND COORDINATION IS COMPLETED.
  - VERIFY EQUIPMENT AND METAL BUILDING ANCHOR BOLT LOCATIONS, SIZES AND DIMENSIONS WITH CERTIFIED DRAWINGS.
- FOUNDATIONS**
- FOR SUBGRADE CONDITIONS AND FOUNDATION RECOMMENDATIONS REFER TO REPORT NO. 91-108 DATED 11/22/81 PREPARED BY GEOTECHNICAL AND ENVIRONMENTAL CONSULTANTS INC.
  - FOUNDATION DESIGNER BASED ON:
    - MIN. DEPTH TO BOTTOM OF FOOTING = 18 INES.
  - BACKFILL FOR FOOTINGS AND UTILITY TRENCHES WITHIN FOOTING AREA SHALL BE MECHANICALLY COMPACTED IN LAYERS (STANDARD PROCTOR).
  - REMOVE ALL ABANDONED FOOTINGS, UTILITIES, ETC., THAT INTERFERE WITH NEW CONSTRUCTION. NEW FOOTINGS MUST BE EXTENDED INTO EXISTING SOILS AS SPECIFIED IN THE SOILS REPORT.
  - RECOMMENDATIONS CONTAINED IN THE SOILS REPORT ARE PART OF THE DESIGN AND SHALL BE REVIEWED BY SOILS ENGINEER PRIOR TO PLACING CONCRETE.
  - COMPLY WITH OSHA REQUIREMENTS AND PROVIDE FOR DESIGN AND CONSTRUCTION OF ALL CATCHING, STOPPING, AND SHORING REQUIRED TO SAFELY RETAIN EXCAVATIONS.
- REINFORCING STEEL**
- DETAIL AND PLACE ALL REINFORCING STEEL IN ACCORDANCE WITH THE OSHA REQUIREMENTS AND THE MANUAL OF STANDARD PRACTICE FOR DETAILING REINFORCED CONCRETE STRUCTURES (ACT 315).
  - REINFORCING BARS: ASTM A-615 GRADE 60.  
WELDED WIRE FABRIC: ASTM A-185.
  - BEND BARS COLD. SPlice REINFORCING ONLY WHERE INDICATED ON THE DRAWINGS.
  - MAKE JOINTS BETWEEN FOOTINGS AND WALLS OR COLUMNS THE SAME GRADE, SIZE AND SPACING (OR NUMBER) AS THE VERTICAL BARS IN THE WALL OR COLUMN.
  - LAP WELDED WIRE FABRIC 6 INCHES OR ONE FULL WIRE SPACING, WHICHEVER IS LARGER.
  - WELDING OF REINFORCING BARS, WHERE INDICATED, SHALL BE IN ACCORDANCE WITH D-1.
- CONCRETE**
- CONCRETE CONSTRUCTION SHALL CONFORM TO THE BUILDING CODE REQUIREMENTS FOR REINFORCED CONCRETE (ACT 318) AND ACT 301.
  - SCHEDULE OF STRUCTURAL CONCRETE 28-DAY STRENGTHS AND TESTS:
    - FOOTINGS: ..... 3000 PSI (DESIGN F<sub>c</sub>=2500 PSI)
    - SLABS ON GRADE: ..... 3000 PSI
  - NO SPECIAL INSPECTION IS REQUIRED FOR CONCRETE WORK.
  - PORTLAND CEMENT: ASTM C-150, TYPE 1 OR TYPE 11.
  - USE TYPE 11 CEMENT FOR ALL SLABS ON GRADE.
  - AGGREGATE FOR HARDENED CONCRETE: ASTM C-33.
  - TRANSIT MIX CONCRETE: ASTM C-94.
  - PLACEMENT, VIBRATION AND CURING OF CONCRETE: CONTRACTOR TO ACI 301 THROUGHOUT CONCRETE SURFACES AGAINST WHICH FRESH CONCRETE IS TO BE PLACED.
  - CLEAR COVERAGE OF CONCRETE OVER OTHER REINFORCING BARS SHALL BE AS FOLLOWS:
    - A. CONCRETE CAST AGAINST EXH. .... 3 INCHES
    - B. CONCRETE EXPOSED TO EARTH OR WEATHER NO. 5 BAR AND SMALLER: ..... 1 1/2 INCHES
    - C. CONCRETE NOT EXPOSED TO EARTH OR WEATHER SLABS, WALLS AND JOISTS: ..... 1 1/2 INCHES
    - D. ALL REINFORCING BARS, ANCHOR BOLTS AND OTHER CONNECTIONS SHALL BE WELL SECURED IN POSITION PRIOR TO POURING OF CONCRETE. VERIFY ANCHOR BOLT SIZES AND LOCATIONS WITH CERTIFIED DRAWINGS AND EQUIPMENT DRAWINGS.
    - E. PROVIDE SLEEVES FOR PLUMBING AND ELECTRICAL OPENINGS BEFORE PLACING CONCRETE. DO NOT CUT ANY REINFORCING UNLESS SHOWN ON THE DRAWINGS. PROVIDE SLEEVES IN ADVANCE OF CONDITIONS NOT SHOWN ON THE DRAWINGS.
    - F. PROTECTING CORNERS OF BEAMS, WALLS, COLUMNS, ETC., SHALL BE FORMED WITH A 3/4" CHAMFER, UNLESS OTHERWISE NOTED.
    - G. PROVIDE A LIGHT BRUSH, NONSKID, FINISH ON ALL INTERIOR AND EXTERIOR SLABS.
    - H. EXPANSION JOINT FILLER: APPROVED, ASPHALT IMPREG-NATED PREMOULDED FILLER, ASTM D1751.
    - I. JOINT SEALANT: SUBMIT MANUFACTURERS DATA FOR APPROVAL. USE 2-PART GUN GRADE POLYURETHANE SEALANT FOR BEAMS, WALLS, COLUMNS, AND OTHER JOINTS. SEALANT TO BE USED FOR INTERIOR JOINTS. USE PRIMER AND BACKER RODS AS REQUIRED AND INSTALL PER MANUFACTURERS PRINTED INSTRUCTIONS.
    - J. JOINT SEALANT: SUBMIT MANUFACTURERS DATA FOR APPROVAL. USE 2-PART GUN GRADE POLYURETHANE SEALANT FOR BEAMS, WALLS, COLUMNS, AND OTHER JOINTS. SEALANT TO BE USED FOR INTERIOR JOINTS. USE PRIMER AND BACKER RODS AS REQUIRED AND INSTALL PER MANUFACTURERS PRINTED INSTRUCTIONS.
- STRUCTURAL STEEL**
- STRUCTURAL STEEL SHALL BE DETAILED, FABRICATED, AND ERECTED IN ACCORDANCE WITH THE AISC SPECIFICATION FOR THE BUILDINGS (LATEST EDITION).
  - STRUCTURAL STEEL SHAPES AND PLATES: ASTM A-36.  
PIPING: ASTM A-53 GRADE B.  
BOLTS: ASTM A-325N
  - WELDING: E70XX ELECTRODES. STRUCTURAL WELDING CODE (AWS D1.1-84).
  - BOLT HOLES SHALL BE 1/16" IN LARGER THAN NOMINAL DIA. OF BOLT USED, EXCEPT AS NOTED.
  - SET GUNNING ANCHOR BOLTS WITH TEMPERAS, GROUT OR EXPANDED POLYMER WITH FASTER SPLITTERS EMBRO 154 OR AS APPROVED.
  - SET DESIGN AND NATURAL CAMBER IN BEAMS UP.
  - CUT ALL OPENINGS AND HOLES. REQUIRED FOR OTHER TRADES, IN THE SHOP. DO NOT FIELD CUT ANY OPENINGS OR HOLES WITHOUT PRIOR APPROVAL FROM THE ENGINEER.
  - FOR WELDS NOT DETAILED USE CONTINUOUS FILLET WELDS AND SIZE PER AISC TABLE 1.17.2A.
  - STRUCTURAL STEEL SURFACES ENCASED IN CONCRETE OR MASSPORT SHALL BE LEFT UNPAINTED.
  - PAINT ALL EXPOSED STEEL WITH SHOP PRIMER AND FINISH COAT. HOT DIP GALVANIZE, AFTER FABRICATION, ALL STEEL GRATING AND EMBEDDED TRENCH ANGLE.
  - SUBMIT SHOP DRAWINGS FOR ENGINEERS REVIEW.

**SCHEDULE 'A'**

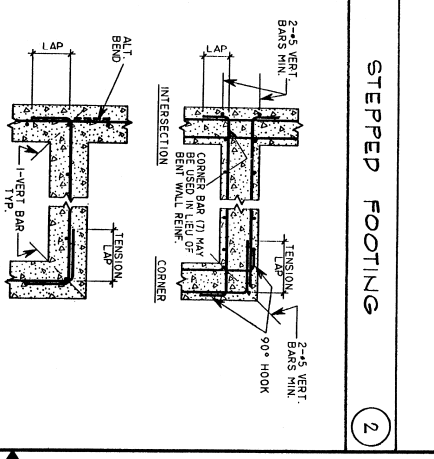
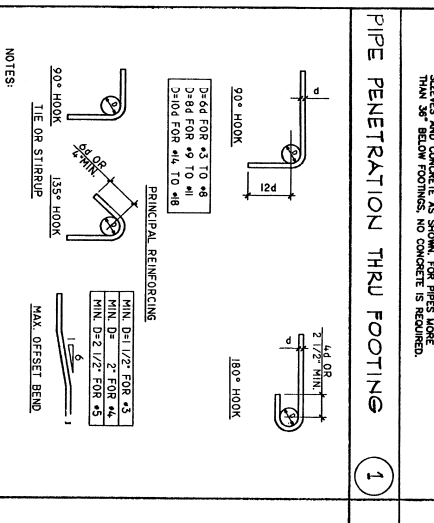
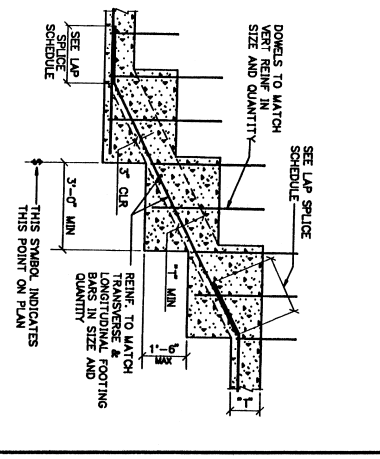
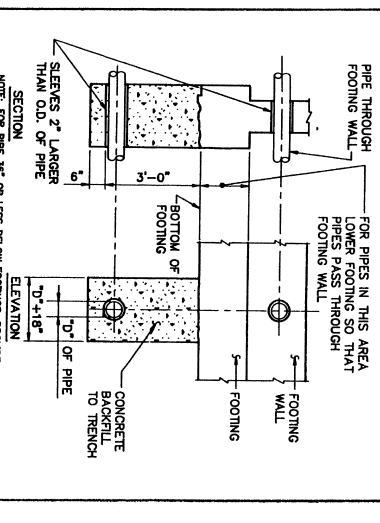
LOCATION IN STRUCT.	CONC. STEEL T/C	BAR SIZE	1	2	3	4	5	6	7	8	9	10	11
BOIT BARS	5000	40	12	13	17	23	30	38	48	58	68	78	88
JOISTS AND SIDING BARS	4000	40	16	16	20	25	34	45	57	72	89	108	
WALL VERT. STEEL	5000	40	16	16	20	24	30	39	50	64	81	100	
5000	40	16	16	20	24	30	39	50	64	81	100	125	

**SCHEDULE 'B'**

LOCATION IN STRUCT.	CONC. STEEL T/C	BAR SIZE	1	2	3	4	5	6	7	8	9	10	11
TOP BARS	5000	40	15	18	23	32	42	53	65	82	100	125	150
BOIT BARS	5000	40	16	22	27	35	48	63	80	100	125	150	
JOISTS AND SIDING BARS	4000	40	12	15	19	22	28	37	49	64	81	100	
WALL VERT. STEEL	5000	40	16	22	27	35	48	63	80	100	125	150	
5000	40	16	22	27	35	48	63	80	100	125	150	175	

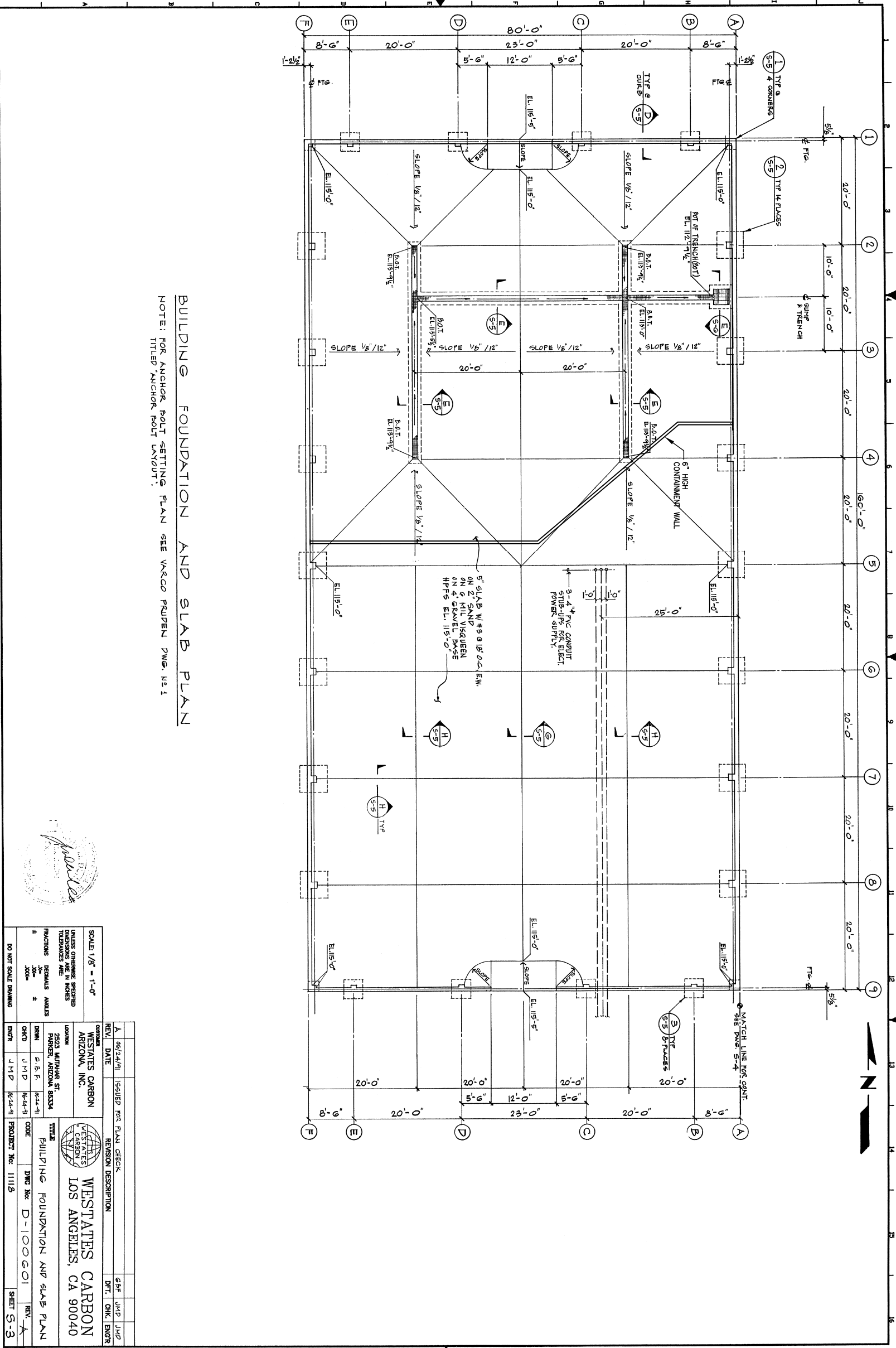


- REGULAR WEIGHT CONCRETE REINFORCING SCHEDULE**
- NOTES:
- THE SCHEDULE ON THIS SHEET APPLY TO REGULAR WEIGHT CONCRETE. 145-150/40U FT.
  - THE REINFORCING IS TO BE SCHEDULED AS SHOWN, IF MORE THAN 50% OF THE LENGTH IS TO BE SCHEDULED IN THE INCREASED 55% LENGTH. THE LAP SPlice LENGTH SHALL BE INCREASED 55%.
  - LAP SPlices LISTED IN THE SCHEDULES ARE CLASS 'B' LAPS.
  - SIZE BARS.
  - LAP LENGTH SPECIFICALLY DETAILED.
  - IN THE OF LAP LENGTHS SCHEDULED.
  - TOP BARS ARE HORIZONTAL BARS SO PLACED THAT 12" OR MORE OF THE LAP SPlice SHOWN.
  - FOR EACH LAP SPlice, THE LAP LENGTH SHALL BE AS SHOWN IN THE SCHEDULE OR CONCRETE CAST BELOW THEM. - BARS THROUGH THEM.
  - THE SPlicing AND PLACING OF REINFORCING SHALL COMPLETELY WITH DETAIL ON THE DRAWINGS. - DETAIL UNLESS SPECIFICALLY DETAILED.
  - BUNDLED BAR SPlices.
  - LAP EACH OTHER.
  - INCREASE LAP LENGTH 30% FOR A 3 BAR BUNDLE.
  - LAP SPliced BARS SHALL NOT BE SPACED TRANSVERSELY FURTHER APART THAN 20% OF THE REQUIRED LAP LENGTH NOT MORE THAN 6'.



- NOTES:**
- THIS DRAWING INCLUDES COMPONENTS OF THE FACILITY THAT ARE EXEMPT FROM PERMITTING UNDER VARIOUS PROVISIONS OF LOCAL DATA RELATED TO THESE COMPONENTS IS PROVIDED FOR INFORMATIONAL PURPOSES AND EASE OF REVIEW ONLY, AND THEY ARE NOT INTENDED TO BECOME REGULATED COMPONENTS OF THE HAZARDOUS WASTE FACILITY.

<p><b>SCALE: NONE</b></p> <p>UNLESS OTHERWISE SPECIFIED DIMENSIONS ARE IN INCHES</p> <p>FRACIONS: 1/8" = 3/16" = 1/4" = 3/8" = 1/2" = 5/8" = 3/4"</p> <p>DO NOT SCALE DRAWING</p>	<p><b>WESTATES CARBON</b> ARIZONA, INC.</p> <p>2523 MUYAHAR ST. PARKER, ARIZONA 85344</p> <p><b>WESTATES CARBON</b> LOS ANGELES, CA 90040</p> <p><b>GENERAL NOTES &amp; STANDARD DETAILS</b></p> <p>DWG NO. D-100601</p> <p>PROJECT NO. IIII 8</p> <p>SHEET S-2</p>	<p><b>REVISION</b></p> <table border="1"> <tr> <th>REV.</th> <th>DATE</th> <th>DESCRIPTION</th> <th>BY</th> <th>CHK.</th> <th>ENGR.</th> </tr> <tr> <td>1</td> <td>4/24/91</td> <td>ISSUED FOR PLAN CHECK</td> <td>JMP</td> <td>JMP</td> <td>JMP</td> </tr> <tr> <td>2</td> <td>6/12/91</td> <td></td> <td>JMP</td> <td>JMP</td> <td>JMP</td> </tr> <tr> <td>3</td> <td>6/24/91</td> <td></td> <td>JMP</td> <td>JMP</td> <td>JMP</td> </tr> <tr> <td>4</td> <td>6/24/91</td> <td></td> <td>JMP</td> <td>JMP</td> <td>JMP</td> </tr> <tr> <td>5</td> <td>6/24/91</td> <td></td> <td>JMP</td> <td>JMP</td> <td>JMP</td> </tr> </table>	REV.	DATE	DESCRIPTION	BY	CHK.	ENGR.	1	4/24/91	ISSUED FOR PLAN CHECK	JMP	JMP	JMP	2	6/12/91		JMP	JMP	JMP	3	6/24/91		JMP	JMP	JMP	4	6/24/91		JMP	JMP	JMP	5	6/24/91		JMP	JMP	JMP	<p><b>CLIENT</b></p> <p>SIEMENS INDUSTRY, INC.</p> <p>2523 MUYAHAR ST. PARKER, AZ 85344</p>	<p><b>DATE</b></p> <p>3/16/12</p>	<p><b>NAME</b></p> <p>CHANGED TO SIEMENS INDUSTRY, INC.</p>	<p><b>REVISION DESCRIPTION</b></p> <p>SIEMENS INDUSTRY, INC.</p> <p>Parker, AZ</p>	<p><b>PROJECT NO.</b></p> <p>D-100601</p>	<p><b>PROJECT NO.</b></p> <p>III I 8</p>	<p><b>PROJECT NO.</b></p> <p>S-2</p>	<p><b>DATE</b></p> <p>2/8/07</p>	<p><b>DATE</b></p> <p>2/8/07</p>	<p><b>DATE</b></p> <p>2/8/07</p>
REV.	DATE	DESCRIPTION	BY	CHK.	ENGR.																																											
1	4/24/91	ISSUED FOR PLAN CHECK	JMP	JMP	JMP																																											
2	6/12/91		JMP	JMP	JMP																																											
3	6/24/91		JMP	JMP	JMP																																											
4	6/24/91		JMP	JMP	JMP																																											
5	6/24/91		JMP	JMP	JMP																																											



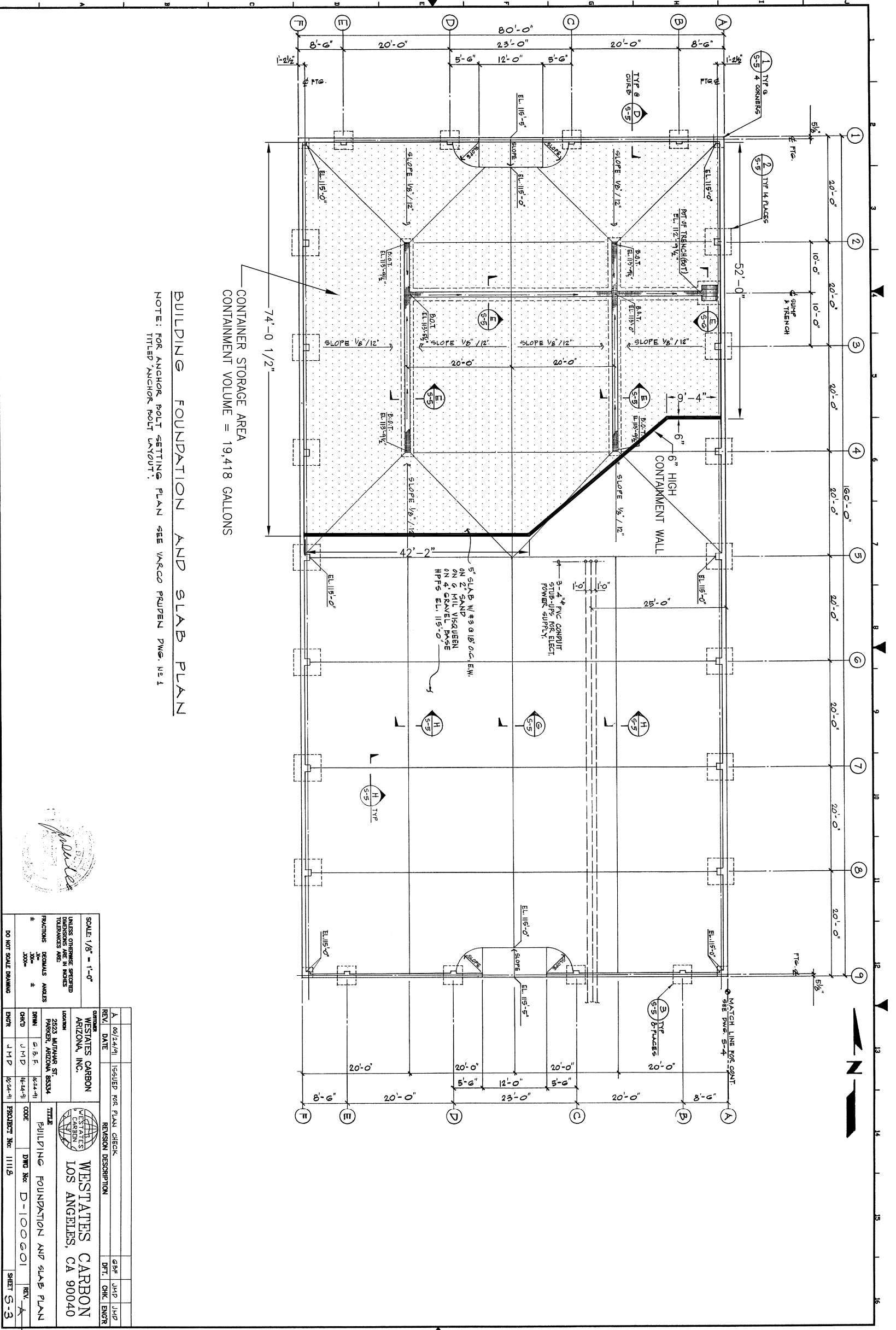
**BUILDING FOUNDATION AND SLAB PLAN**  
 NOTE: FOR ANCHOR BOLT SETTING PLAN SEE VACCO PRUDEN DWG. N-1  
 TITLED ANCHOR BOLT LAYOUT.



SCALE 1/8" = 1'-0"	DO NOT SCALE DRAWING
UNLESS OTHERWISE SPECIFIED DIMENSIONS ARE IN INCHES FRACTIONS DENOMINATORS ARE 16, 32, 64, 128	
DATE: 06/24/11	DESIGNED FOR PLAN CHECK
REVISION DESCRIPTION	DATE
1. WESTATES CARBON ARIZONA, INC.	
2. WESTATES CARBON ARIZONA, INC.	
3. WESTATES CARBON ARIZONA, INC.	
4. WESTATES CARBON ARIZONA, INC.	
5. WESTATES CARBON ARIZONA, INC.	
6. WESTATES CARBON ARIZONA, INC.	
7. WESTATES CARBON ARIZONA, INC.	
8. WESTATES CARBON ARIZONA, INC.	
9. WESTATES CARBON ARIZONA, INC.	
10. WESTATES CARBON ARIZONA, INC.	
11. WESTATES CARBON ARIZONA, INC.	
12. WESTATES CARBON ARIZONA, INC.	
13. WESTATES CARBON ARIZONA, INC.	
14. WESTATES CARBON ARIZONA, INC.	
15. WESTATES CARBON ARIZONA, INC.	
16. WESTATES CARBON ARIZONA, INC.	
17. WESTATES CARBON ARIZONA, INC.	
18. WESTATES CARBON ARIZONA, INC.	
19. WESTATES CARBON ARIZONA, INC.	
20. WESTATES CARBON ARIZONA, INC.	
21. WESTATES CARBON ARIZONA, INC.	
22. WESTATES CARBON ARIZONA, INC.	
23. WESTATES CARBON ARIZONA, INC.	
24. WESTATES CARBON ARIZONA, INC.	
25. WESTATES CARBON ARIZONA, INC.	
26. WESTATES CARBON ARIZONA, INC.	
27. WESTATES CARBON ARIZONA, INC.	
28. WESTATES CARBON ARIZONA, INC.	
29. WESTATES CARBON ARIZONA, INC.	
30. WESTATES CARBON ARIZONA, INC.	
31. WESTATES CARBON ARIZONA, INC.	
32. WESTATES CARBON ARIZONA, INC.	
33. WESTATES CARBON ARIZONA, INC.	
34. WESTATES CARBON ARIZONA, INC.	
35. WESTATES CARBON ARIZONA, INC.	
36. WESTATES CARBON ARIZONA, INC.	
37. WESTATES CARBON ARIZONA, INC.	
38. WESTATES CARBON ARIZONA, INC.	
39. WESTATES CARBON ARIZONA, INC.	
40. WESTATES CARBON ARIZONA, INC.	
41. WESTATES CARBON ARIZONA, INC.	
42. WESTATES CARBON ARIZONA, INC.	
43. WESTATES CARBON ARIZONA, INC.	
44. WESTATES CARBON ARIZONA, INC.	
45. WESTATES CARBON ARIZONA, INC.	
46. WESTATES CARBON ARIZONA, INC.	
47. WESTATES CARBON ARIZONA, INC.	
48. WESTATES CARBON ARIZONA, INC.	
49. WESTATES CARBON ARIZONA, INC.	
50. WESTATES CARBON ARIZONA, INC.	
51. WESTATES CARBON ARIZONA, INC.	
52. WESTATES CARBON ARIZONA, INC.	
53. WESTATES CARBON ARIZONA, INC.	
54. WESTATES CARBON ARIZONA, INC.	
55. WESTATES CARBON ARIZONA, INC.	
56. WESTATES CARBON ARIZONA, INC.	
57. WESTATES CARBON ARIZONA, INC.	
58. WESTATES CARBON ARIZONA, INC.	
59. WESTATES CARBON ARIZONA, INC.	
60. WESTATES CARBON ARIZONA, INC.	
61. WESTATES CARBON ARIZONA, INC.	
62. WESTATES CARBON ARIZONA, INC.	
63. WESTATES CARBON ARIZONA, INC.	
64. WESTATES CARBON ARIZONA, INC.	
65. WESTATES CARBON ARIZONA, INC.	
66. WESTATES CARBON ARIZONA, INC.	
67. WESTATES CARBON ARIZONA, INC.	
68. WESTATES CARBON ARIZONA, INC.	
69. WESTATES CARBON ARIZONA, INC.	
70. WESTATES CARBON ARIZONA, INC.	
71. WESTATES CARBON ARIZONA, INC.	
72. WESTATES CARBON ARIZONA, INC.	
73. WESTATES CARBON ARIZONA, INC.	
74. WESTATES CARBON ARIZONA, INC.	
75. WESTATES CARBON ARIZONA, INC.	
76. WESTATES CARBON ARIZONA, INC.	
77. WESTATES CARBON ARIZONA, INC.	
78. WESTATES CARBON ARIZONA, INC.	
79. WESTATES CARBON ARIZONA, INC.	
80. WESTATES CARBON ARIZONA, INC.	
81. WESTATES CARBON ARIZONA, INC.	
82. WESTATES CARBON ARIZONA, INC.	
83. WESTATES CARBON ARIZONA, INC.	
84. WESTATES CARBON ARIZONA, INC.	
85. WESTATES CARBON ARIZONA, INC.	
86. WESTATES CARBON ARIZONA, INC.	
87. WESTATES CARBON ARIZONA, INC.	
88. WESTATES CARBON ARIZONA, INC.	
89. WESTATES CARBON ARIZONA, INC.	
90. WESTATES CARBON ARIZONA, INC.	
91. WESTATES CARBON ARIZONA, INC.	
92. WESTATES CARBON ARIZONA, INC.	
93. WESTATES CARBON ARIZONA, INC.	
94. WESTATES CARBON ARIZONA, INC.	
95. WESTATES CARBON ARIZONA, INC.	
96. WESTATES CARBON ARIZONA, INC.	
97. WESTATES CARBON ARIZONA, INC.	
98. WESTATES CARBON ARIZONA, INC.	
99. WESTATES CARBON ARIZONA, INC.	
100. WESTATES CARBON ARIZONA, INC.	

**NOTES:**  
 1. THIS DRAWING INCLUDES COMPONENTS OF THE FACILITY THAT ARE EXEMPT FROM PERMITTING UNDER VARIOUS PROVISIONS OF ROCK DATA RELATED TO THESE COMPONENTS AS PREPARED BY THE CLIENT'S ENGINEER AND EAST OF REVIEW ONLY AND THEY ARE NOT INTENDED TO BECOME REGULATED COMPONENTS OF THE HAZARDOUS WASTE FACILITY.

PROJECT NO.	2523 MUTAHAR ST. PARKER, AZ 85344	INDUSTRY, INC.	SIEMENS INDUSTRY, INC.
LOCATION:	2523 MUTAHAR ST. PARKER, AZ 85344	INDUSTRY, INC.	SIEMENS INDUSTRY, INC.
TITLE:	WAREHOUSE BUILDING FOUNDATION AND SLAB PLAN		
DATE:	2/01/07	DRAWN:	JBE
DATE:	2/01/07	CHK'D:	KEM
ENGR:		ENGR:	
PART NO.	DWG No. D100601-S-3	REV. B1	

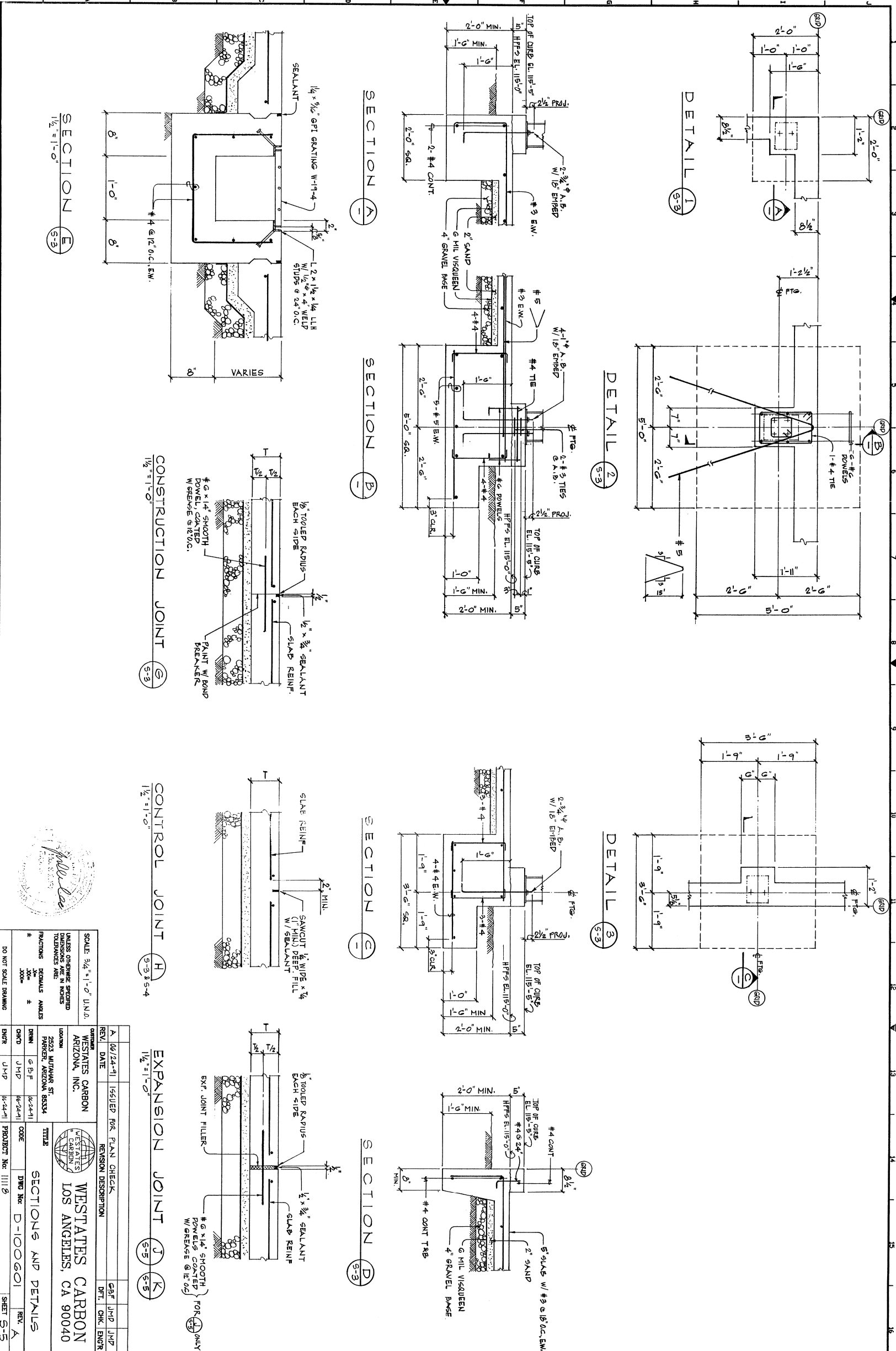


**BUILDING FOUNDATION AND SLAB PLAN**  
 NOTE: FOR ANCHOR BOLT SETTING PLAN SEE VARCO RUPDEN DWG. NO. 1  
 TITLED 'ANCHOR BOLT LAYOUT'.

SCALE: 1/8" = 1'-0"		UNLESS OTHERWISE SPECIFIED DIMENSIONS ARE IN INCHES TOLERANCES ARE:	
±	3/16"	±	3/16"
±	3/32"	±	3/32"
DO NOT SCALE DRAWING			
REV.	DATE	DESCRIPTION	BY
A	06/24/11	ISSUED FOR PLAN CHECK	gjf jmp jmp
WESTATES CARBON ARIZONA, INC.			
2523 MUTAHAR ST. PARKER, ARIZONA 85344			
PROJECT No. D-100601			
SHEET S-3			

**NOTES**  
 1. THIS DRAWING INCLUDES COMPONENTS OF THE FACILITY THAT ARE EXEMPT FROM PERMITTING UNDER VARIOUS PROVISIONS OF RCAP. DATA RELATED TO THESE COMPONENTS IS PROVIDED FOR INFORMATIONAL PURPOSES AND USE OF REVIEW ONLY, AND THEY ARE NOT INTENDED TO BE REGULATED COMPONENTS OF THE HAZARDOUS WASTE FACILITY.

PLAT SCALE: 1" = 40'	DO NOT SCALE DRAWING	PROJECT No.	2523 MUTAHAR ST. PARKER, AZ 85344	LOCATION:	SIEMENS INDUSTRY, INC. Parker, AZ
THIS DRAWING IS THE PROPERTY OF SIEMENS INDUSTRY, INC. AND IS TO BE USED ONLY FOR THE PROJECT AND SITE SPECIFIC TO WHICH IT WAS PREPARED. NO PARTS OF THIS DRAWING ARE TO BE REPRODUCED OR COPIED IN ANY MANNER WITHOUT THE EXPRESS WRITTEN PERMISSION OF SIEMENS INDUSTRY, INC.	DO NOT SCALE DRAWING	PROJECT No.	2523 MUTAHAR ST. PARKER, AZ 85344	LOCATION:	SIEMENS INDUSTRY, INC. Parker, AZ
REV.	DATE	NAME CHANGED TO SIEMENS INDUSTRY, INC.	JBE	KEM	
B	2-21-07	ADD CONTAINMENT WALL TO WESTATES DRAWING	JBE	KEM	
REV.	DATE	REVISION DESCRIPTION	DRAWN	CHK'D	ENGR
CUSTOMER:	SIEMENS INDUSTRY, INC.				
TITLE:		WAREHOUSE BUILDING CONTAINER STORAGE AREA LAYOUT & VOLUME			
PART No.	DWG No.	D100601-S-3V	REV.	B1	



SCALE: 3/4" = 1'-0" UNL.	UNLESS OTHERWISE SPECIFIED DIMENSIONS ARE IN INCHES FRACTIONS DECIMALS ANGLES
DO NOT SCALE DRAWING	
DATE: 06/24-11	DESIGNED FOR: PLAN CHECK
REVISION DESCRIPTION	DFT. CHK. ENGR
WESTATES CARBON ARIZONA, INC.	
2523 MUYAHAR ST. PARKER, ARIZONA 85334	
TITLE: WESTATES CARBON LOS ANGELES, CA 90040	
SECTION AND DETAILS	
DWG No: D-100601	REV. A
PROJECT No: 11118	SHEET S-5

**NOTES:**

- THIS DRAWING INCLUDES COMPONENTS OF THE FACILITY THAT ARE EXEMPT FROM PERMITTING UNDER VARIOUS PROVISIONS OF ROCA. DATA RELATED TO THESE COMPONENTS IS PROVIDED FOR INFORMATIONAL PURPOSES AND EASE OF REVIEW ONLY, AND THEY ARE NOT INTENDED TO BECOME REGULATED COMPONENTS OF THE HAZARDOUS WASTE FACILITY.

DO NOT SCALE DRAWING

PLLOT SCALE: 1" = 40'

THIS DRAWING IS THE PROPERTY OF SIEMENS AND CANNOT BE REPRODUCED OR DERIVED TO ANY MANNER WITHOUT THE WRITTEN PERMISSION OF SIEMENS INDUSTRY, INC.

LOCATION: SIEMENS INDUSTRY, INC. 2523 MUYAHAR ST. PARKER, AZ 85344

TITLE: WAREHOUSE BUILDING SECTIONS AND DETAILS

NAME CHANGED TO SIEMENS INDUSTRY, INC.

SIEMENS INDUSTRY, INC. Parker, AZ

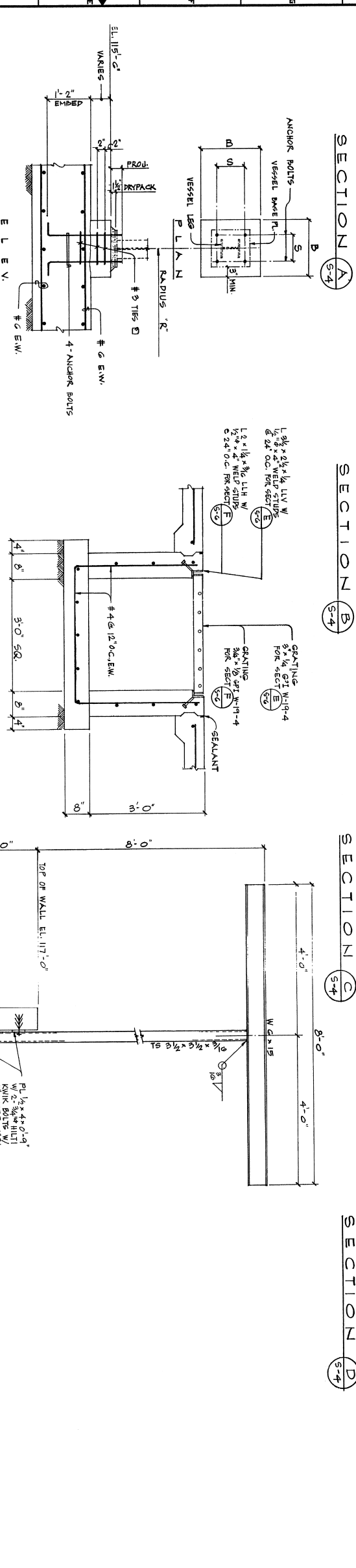
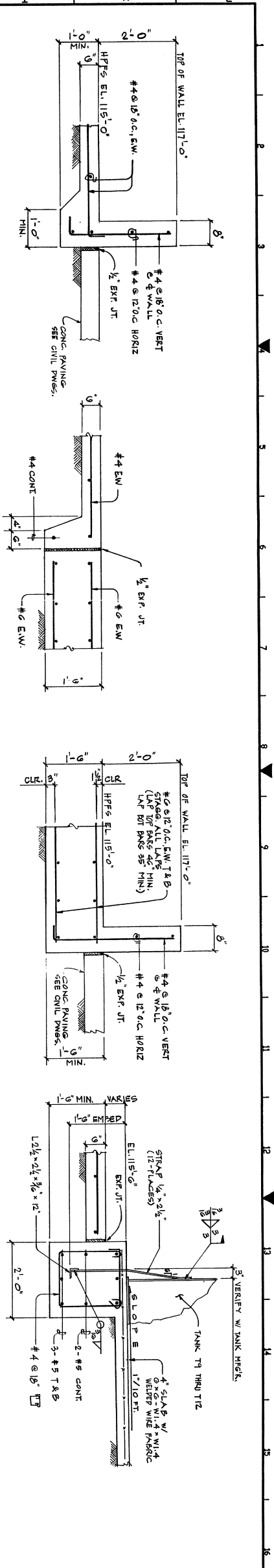
REVISION DESCRIPTION

REV.	DATE	BY	CHK'D
A1	3-16-12	JBE	KEM
		DRAWN	CHK'D
		JBE	ENG'R
		KEM	

DWG No. D100601-S-5

REV. A1





TANK MARK	A-BOLT SIZE	A-BOLT PROUJ	R	B	S
T1	1"Ø	G1	G-8 1/2"	12"	12"
T2	1"Ø	G1	G-8 1/2"	12"	12"
T3	1"Ø	G1	5-1 1/2"	12"	12"
T4	1"Ø	G1	5-1 1/2"	12"	12"
T5	3/4"Ø	G1	4-4"	9"	9"
T6	3/4"Ø	G1	4-4"	9"	9"
T7	3/4"Ø	G1	4-4"	9"	9"

NOTE: VERIFY ALL ANCHOR BOLT DETAILS AND DIMENSIONS WITH CERTIFIER VESSEL DWGS.

DETAIL 1 (S-4)



**NOTES:**

- THIS DRAWING INCLUDES COMPONENTS OF THE FACILITY THAT ARE EXEMPT FROM PERMITTING UNDER VARIOUS PROVISIONS OF REG. DATA RELATED TO THESE COMPONENTS IS PROVIDED FOR INFORMATIONAL PURPOSES AND USE OF REVIEW ONLY, AND THEY ARE NOT INTENDED TO BECOME REGULATED COMPONENTS OF THE HAZARDOUS WASTE FACILITY.

SCALE: 3/4" = 1'-0"	UNLESS OTHERWISE SPECIFIED DIMENSIONS ARE IN INCHES
FRACIONS: 1/2, 3/4, 1, 1 1/2, 2, 3, 4, 5, 6, 8, 10, 12, 16, 20, 24, 30, 36, 48, 60, 72, 96, 120	DO NOT SCALE DRAWING

REV. A	DATE: 06/24/11	ISSUED FOR: PLAN CHECK	BY: JHP
REV. B	DATE:	REVISION DESCRIPTION:	BY: JHP

CUSTOMER: SIEMENS INDUSTRY, INC.	PROJECT NO.: 2523 MUTAHAR ST. PARKER, AZ 85344
LOCATION: SIEMENS INDUSTRY, INC. PARKER, AZ	TITLE: SECTIONS AND DETAILS
PROJECT NO.: 2523 MUTAHAR ST. PARKER, AZ 85344	DWG No: D-100601
PROJECT NO.: 2523 MUTAHAR ST. PARKER, AZ 85344	SHEET: S-G

NAME CHANGED TO SIEMENS INDUSTRY, INC.	JBE	KEM
REVISION DESCRIPTION	DRAWN	CHK'D
DATE: 3-16-12	DATE: 2/8/07	DATE: 2/8/07
DATE: 3-16-12	DATE: 2/8/07	DATE: 2/8/07
DATE: 3-16-12	DATE: 2/8/07	DATE: 2/8/07

PLOT SCALE: 1" = 40'

DO NOT SCALE DRAWING

THIS DRAWING IS THE PROPERTY OF SIEMENS AND CANNOT BE REPRODUCED OR TRANSMITTED IN ANY FORM OR BY ANY MEANS WITHOUT THE EXPRESS WRITTEN PERMISSION OF SIEMENS INDUSTRY, INC.

WAREHOUSE BUILDING SECTIONS AND DETAILS

PART No. DWG No. D100601-S-6 REV. A1